

PARIS SOCIETY  
MEMBERSHIP



## TABLE OF CONTENTS

*p.8* **BENEFITS**  
Restaurants - Hotels - Spa

*p.26* **EVENTS**  
Concept - Categories

*p.34* **BECOMING A MEMBER**



## PARIS SOCIETY MEMBERSHIP

—

Dear Members,

I'm Alma, the Guest Relation of Paris Society Membership. My role: to fulfill your desires, make your habits my own, answer all your questions, and offer you the most exquisite experiences. I will accompany you throughout the year, ensuring every detail is taken care of to provide you with the very best of Paris Society.

*Alma*

**BENEFITS**

**RESTAURANTS - HOTELS - SPA**

—



## BENEFITS RESTAURANTS

—

Guaranteed table on the same day  
of booking up to 3 hours before

Ability to book at normally unavailable  
booking slots, including  
8:00 PM, 8:30 PM, and 9:00 PM

Seamless and autonomous booking via  
your dedicated member application

A complimentary lunch on your birthday  
for two guests (excluding alcohol)

Exclusive discounts on venue privati-  
zation fees for your private or corporate  
events

Complimentary access to the Kids Club  
for your children





## BENEFITS HOTELS

—

20% off accommodation in our hotels  
from Sunday to Thursday  
(excluding school holidays)

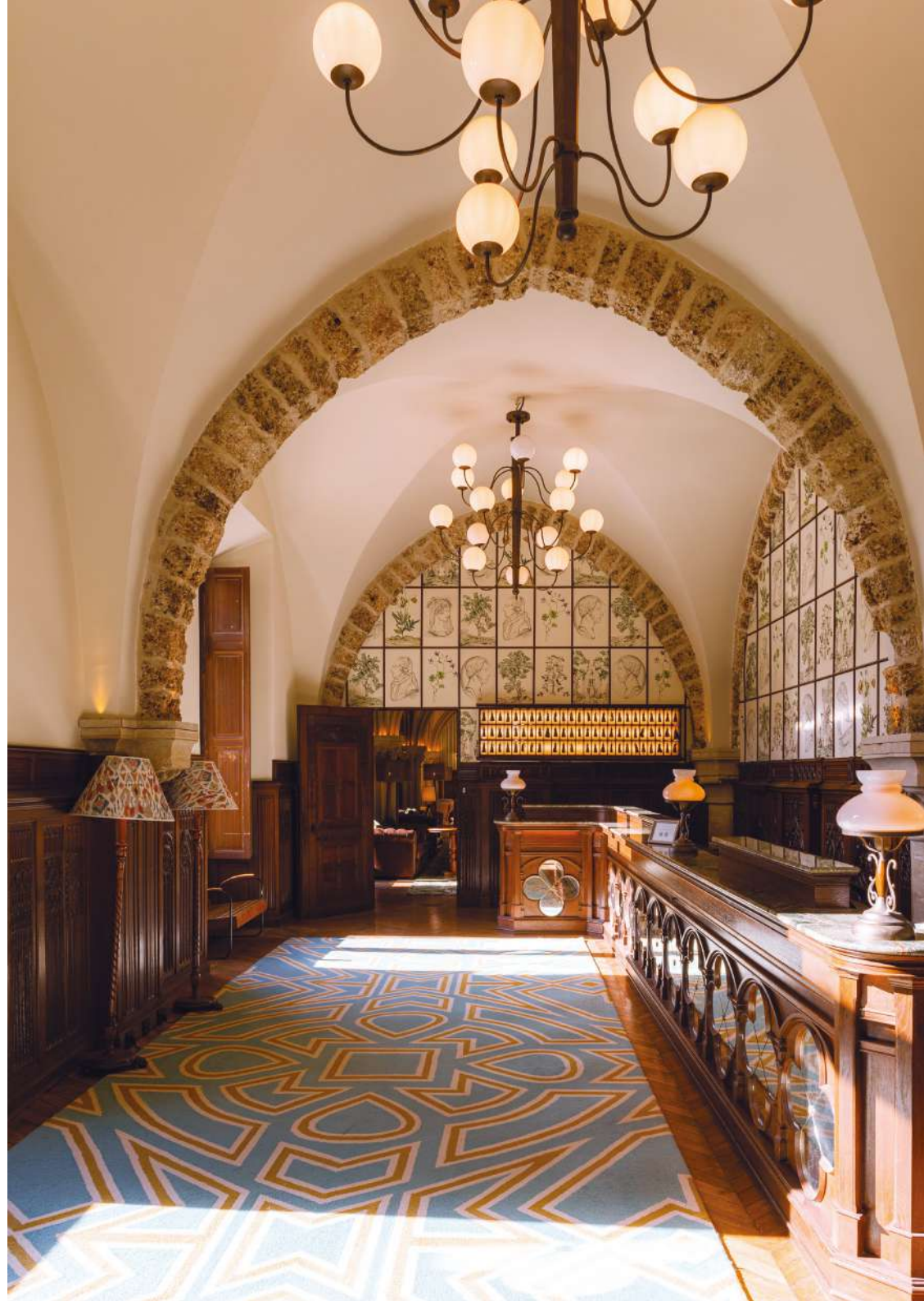
Automatic room upgrade  
upon availability

Early check-in and late check-out for  
a seamless experience

Personalized welcome and special  
attentions

Access to unique programs designed  
especially for you

Effortless booking via your dedicated  
member application





## BENEFITS

—

Privileged access to the Domaine,  
its restaurants, and activities  
(free entry to the Domaine)

Free programming for children

Special events exclusively

Preferential advantages on the padel court





## BENEFITS

### SPA

—

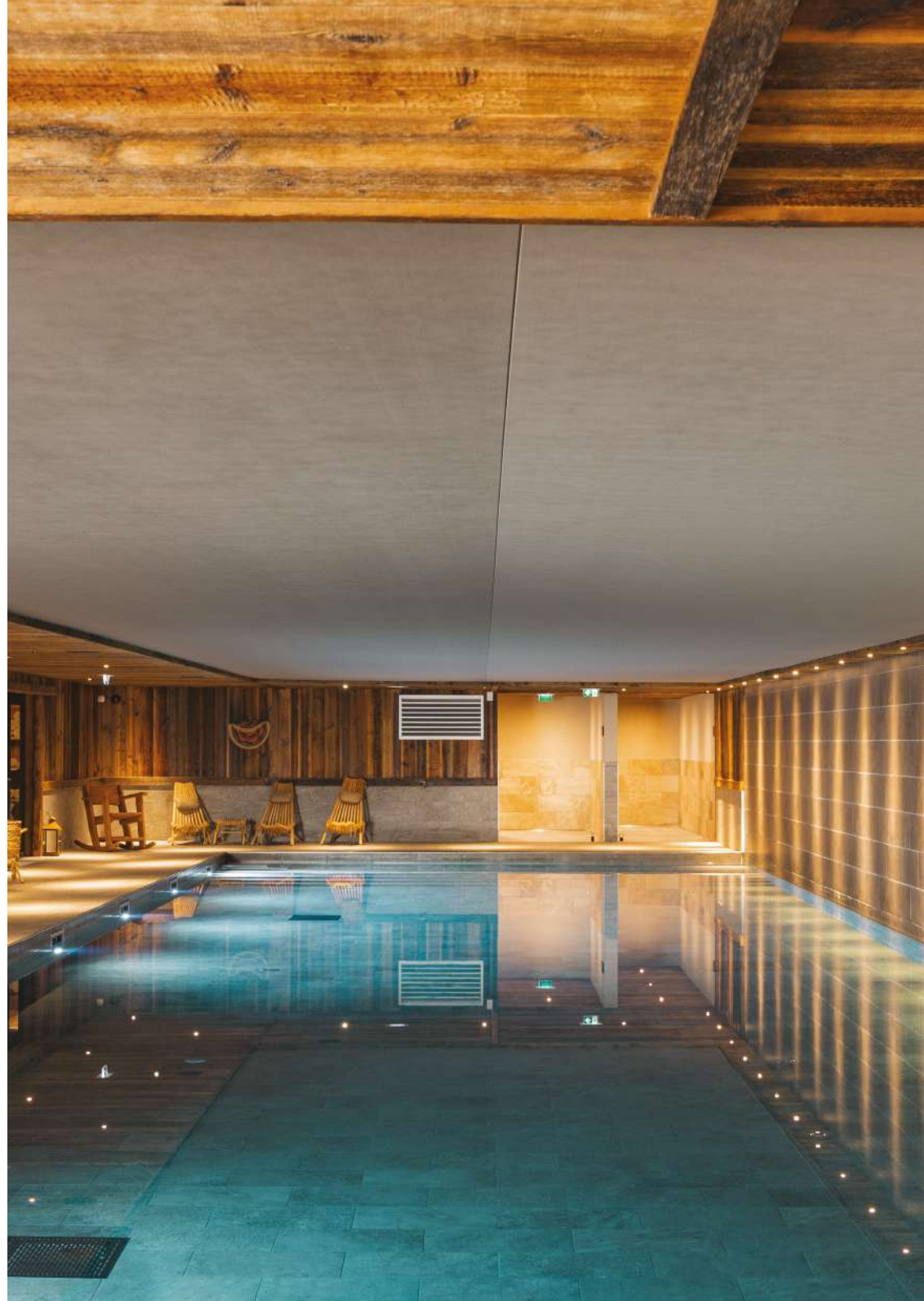
Complimentary technological add-ons during your treatments, including LED Therapy, Theraface, Jetboots, and GuaSha.

VIP in-room SPA welcome, featuring a selection of our partner brands.

Exclusive discounts on treatments: -15% on *Mythique*, *Douceur*, and *Intense massages*, and -10% on the Tata Harper facial treatment.

Seamless self-booking: Easily schedule your treatments via the dedicated members' app.

Personalized wellness concierge service: Tailored advice, customized treatment recommendations, and a personalized skincare.



**EVENTS**  
**CONCEPT - CATEGORIES**

—



## EVENTS CONCEPT

The very essence of membership is built around exclusive events, hosted in our iconic venues as well as in carefully selected external locations.

### IN —

- Our restaurants
- Our hotels

### OUT —

- In outdoor locations
- In different cities

## EVENTS CATEGORIES

### PARIS SOCIETY EVENTS AND EXPERIENCES

---

These invitation-only events embody  
the very essence of the group.

Offering an experience that blends exclusivity, discovery,  
and elegance, they open the doors to exceptional evenings  
and are designed for a carefully curated community.

### MEMBER-ONLY EVENTS

---

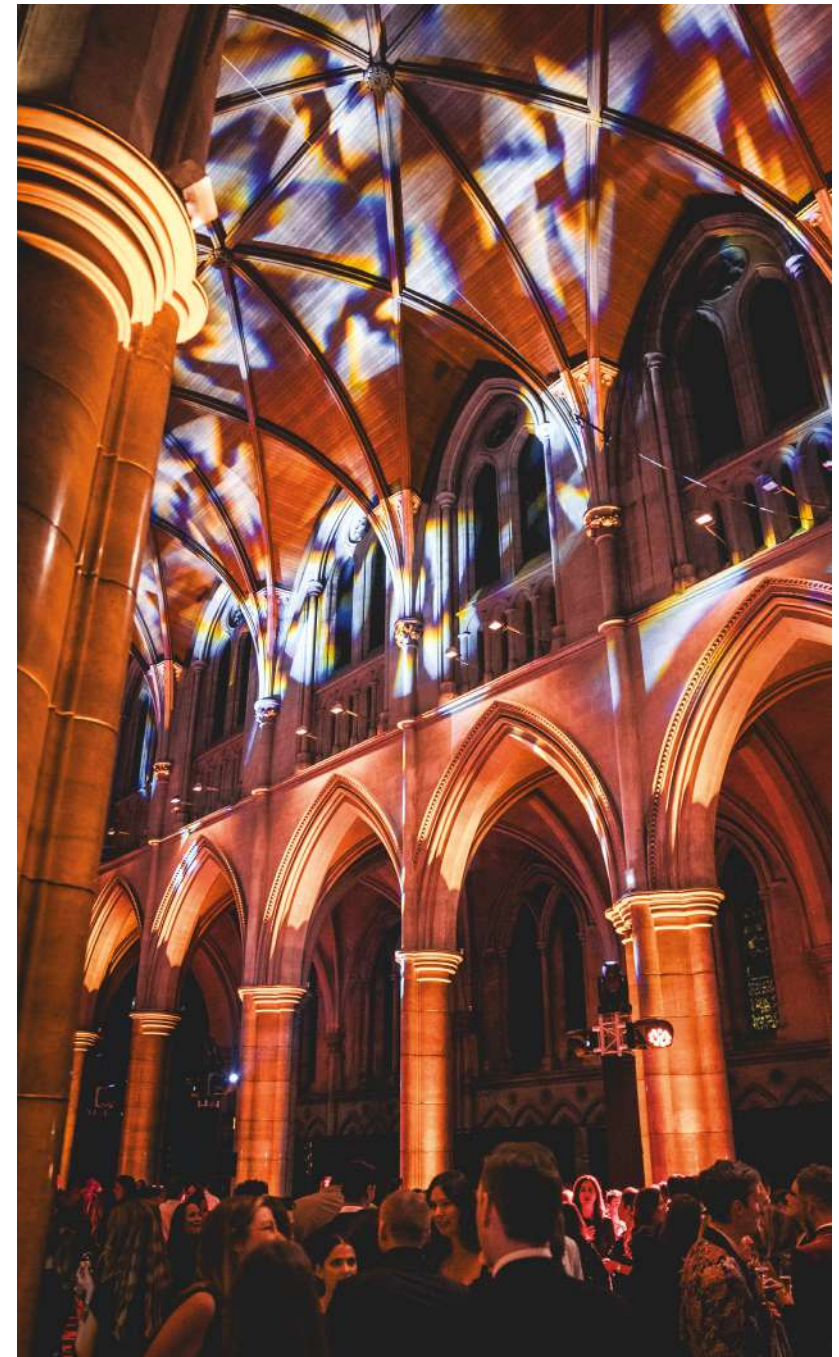
Exclusively reserved for Paris Society Membership  
members, these events explore a wide range of themes,  
from sports to art and culture. Tailor-made, they foster  
connections between members while celebrating  
a shared vision of a refined and purposeful art of living.

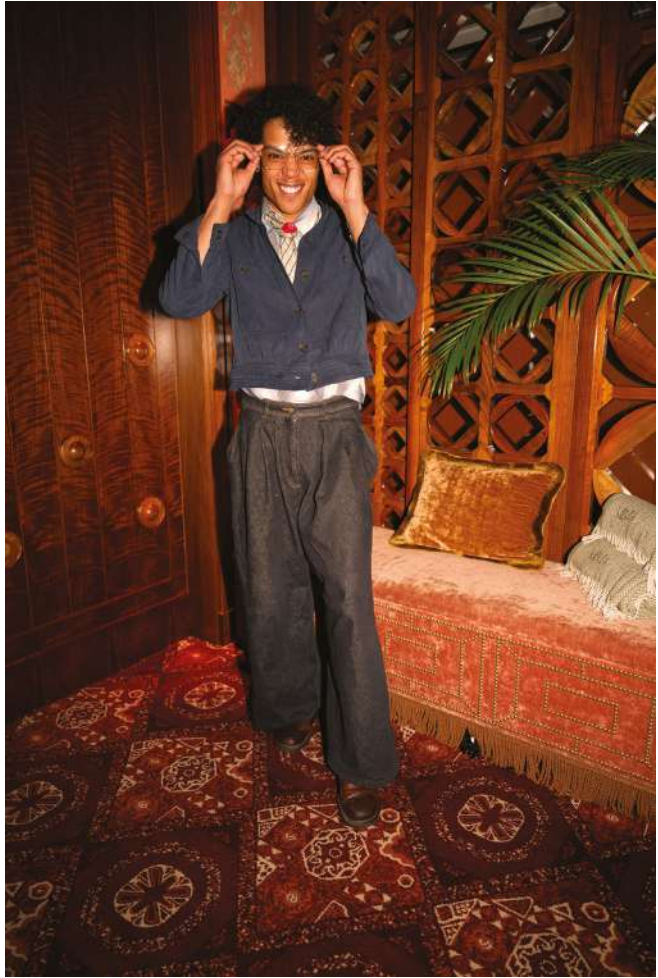
### EVENTS AND INVITATIONS THROUGH PARTNERSHIPS

---

Through collaborations with prestigious partners, Paris  
Society offers its members the chance to experience  
exceptional events, ranging from exclusive galas to  
extraordinary cultural experiences. These partnerships  
pave the way for a multitude of unique and captivating  
opportunities.

*Opportunity to invite one or more guests to selected events*





## BECOMING A MEMBER

—

## BECOMING A MEMBER

### JOINING FEE

—

INDIVIDUAL	COUPLE	INDIVIDUAL - 33 YEARS
€1 000 / year  + €500 joining fee	€1 700 / year  + €750 joining fee  <i>1 couple account for 2 cards</i>	€500 / year  + €300 joining fee



PARIS SOCIETY  
MEMBERSHIP

UNLIMITED@PARIS-SOCIETY.COM

38, AV. DES CHAMPS ÉLYSÉES  
PARIS 8<sup>ÈME</sup>